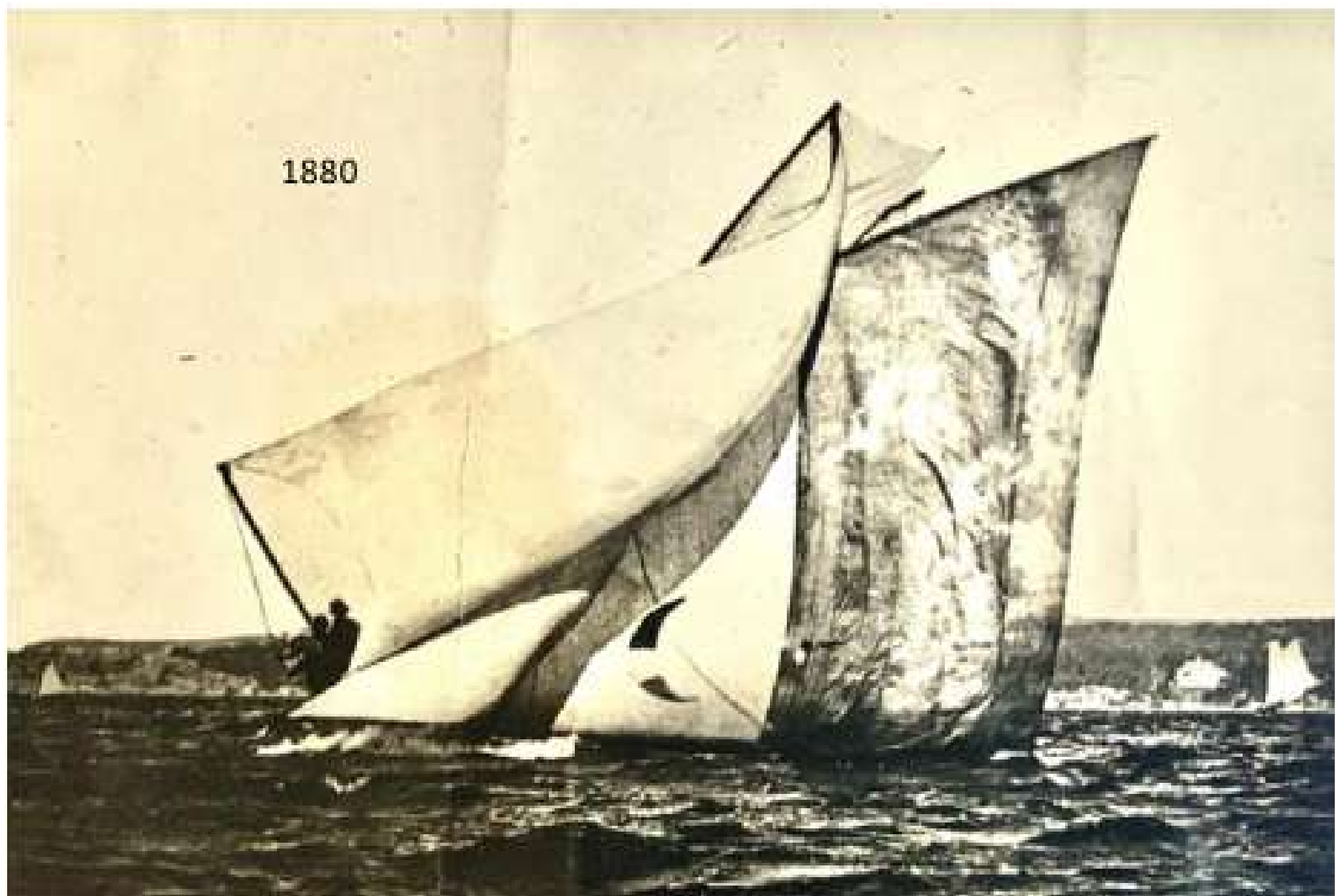


Development of Sails

14 foot skiff development 1880 to present

AC50 and AC75 main sales

1880



1890

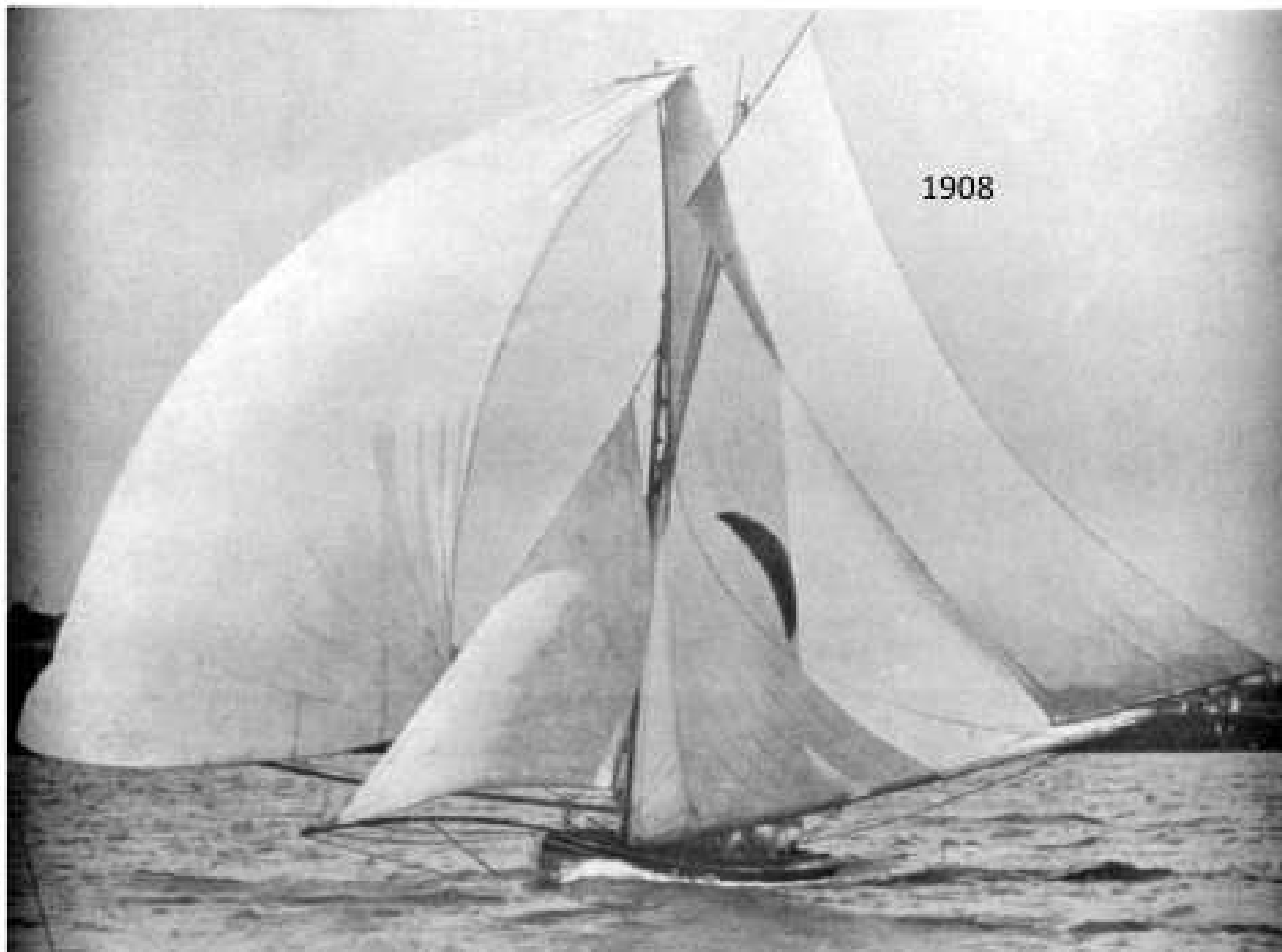


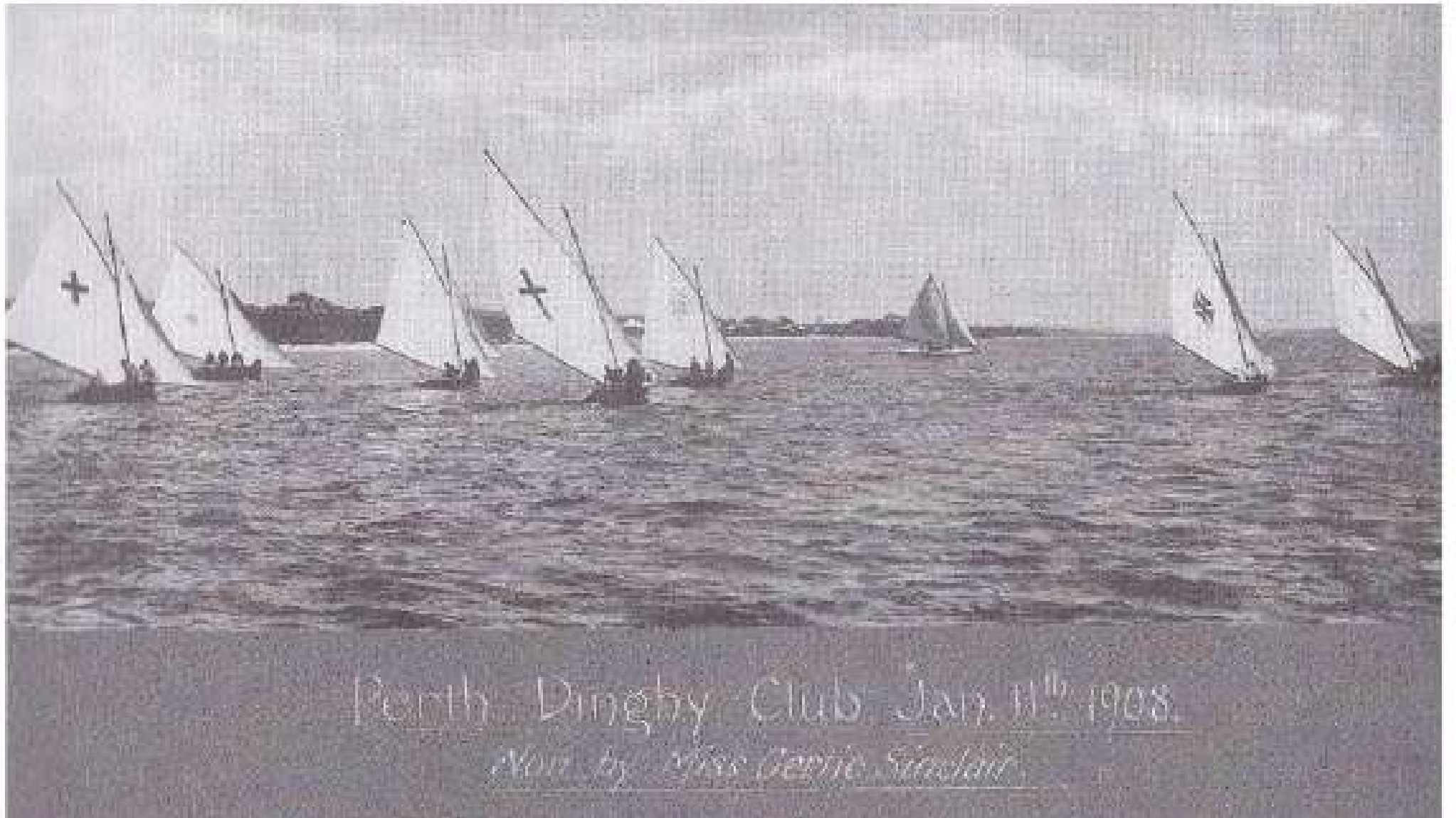


MARJORIE, 1899



QUEENSLANDER 1903





Perth Dinghy Club Jan. 11th 1908.
seen by Miss Gerrie Stewart.

1905



1910



1912



1922



MEMBERS OF GREENS ISLAND CLUB keeping in Fine Bay and Downway after a successful sailing day. Conditions were ideal for sailing.

ADELAIDE 1929 - 31

SILVER
SPRAY



SUNNY SOUTH

JOHN SAVAGE



The first mixture of Gaff and Marconi rigs





*Start of the Aquatic Championships in Fitch in 1956.
From left: Swamp, Fred, Vince, Nyles, Yafant*



Edna and Wilbur winning Aquatic Championship 1974



Non- flexible Banana must were popular for a while. The sail camber increased as the main sheet was eased. Predated boom vang!!!



Marjorie 1950s



1950's

1950



1960





DIFINO 1968



1974



VECTOR Alan Smith V151

1979



2004

JB 1270

AJS 333



2003





2020

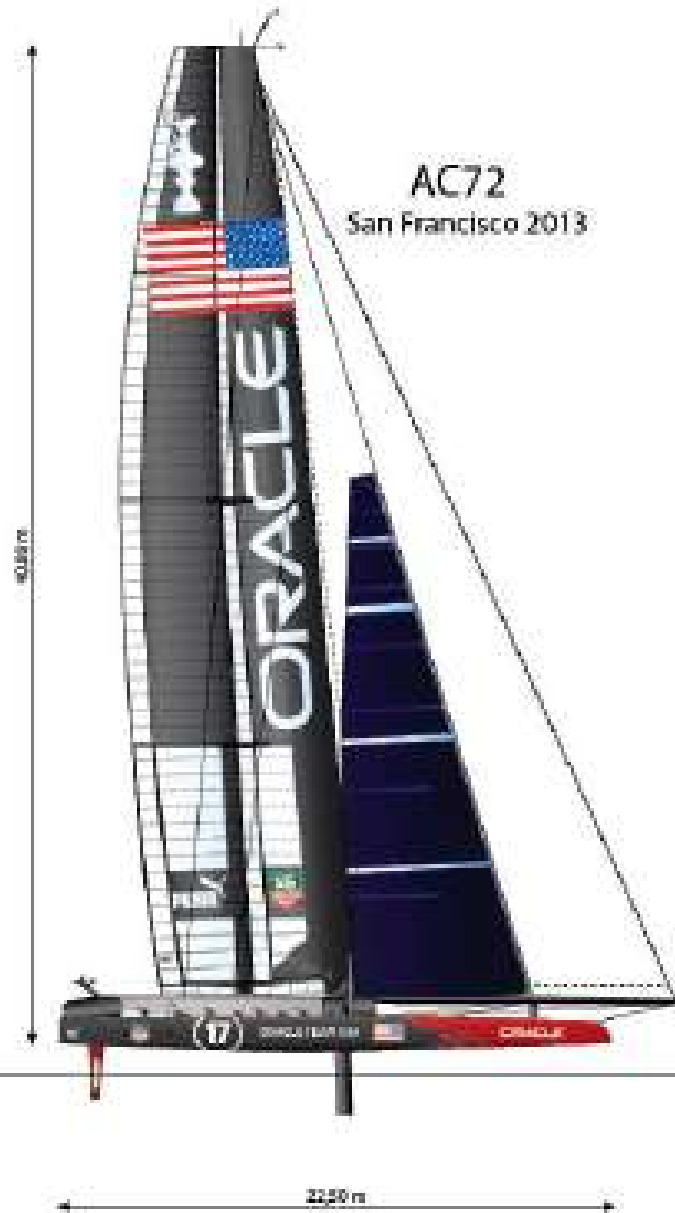
Modern International 14



1910 to present day

AC72 - AC Class - AC75
© Francois Chevalier 2019

AC72
San Francisco 2013



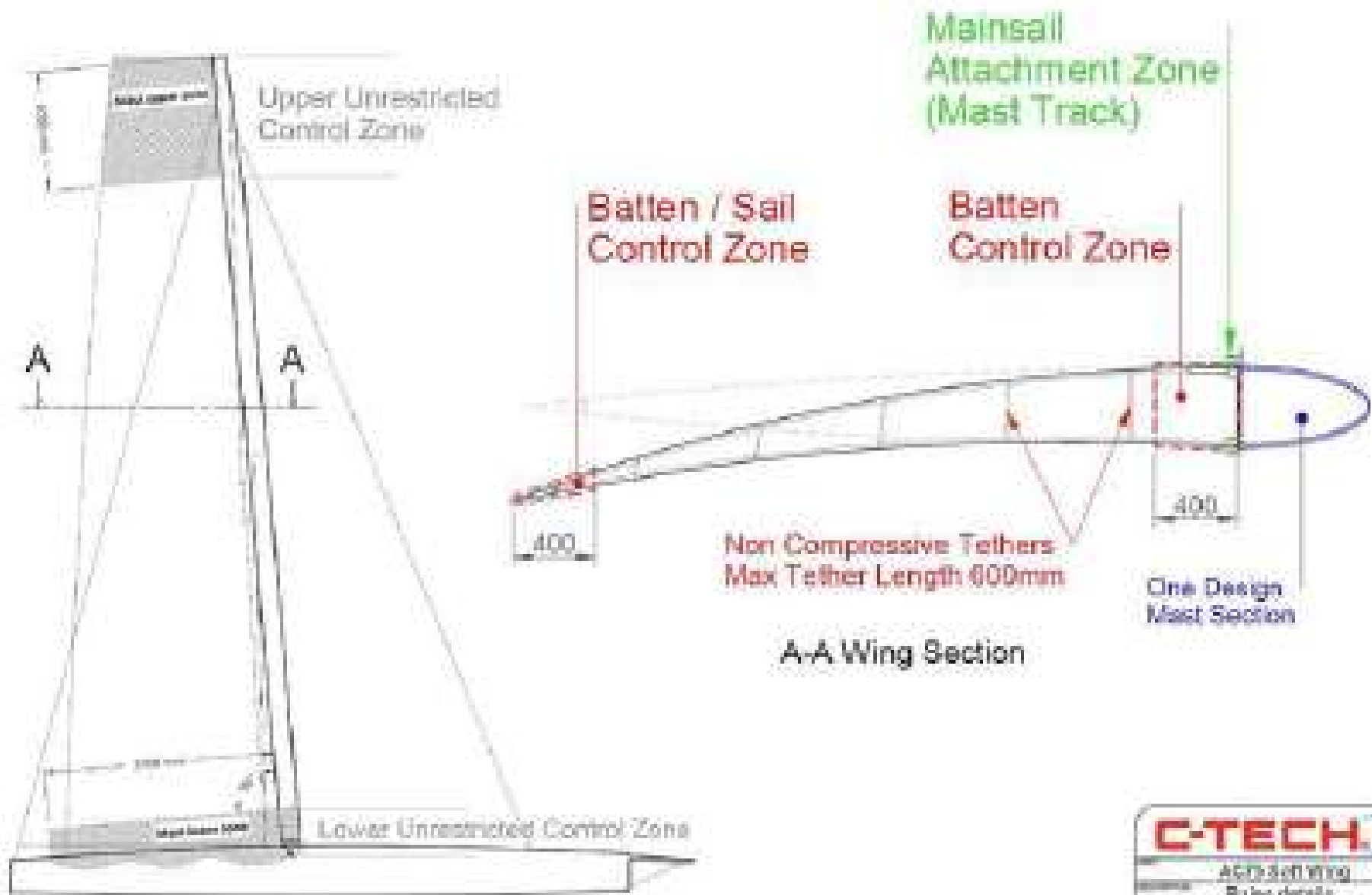
AC Class
Bermudes 2017



AC75
Auckland 2021







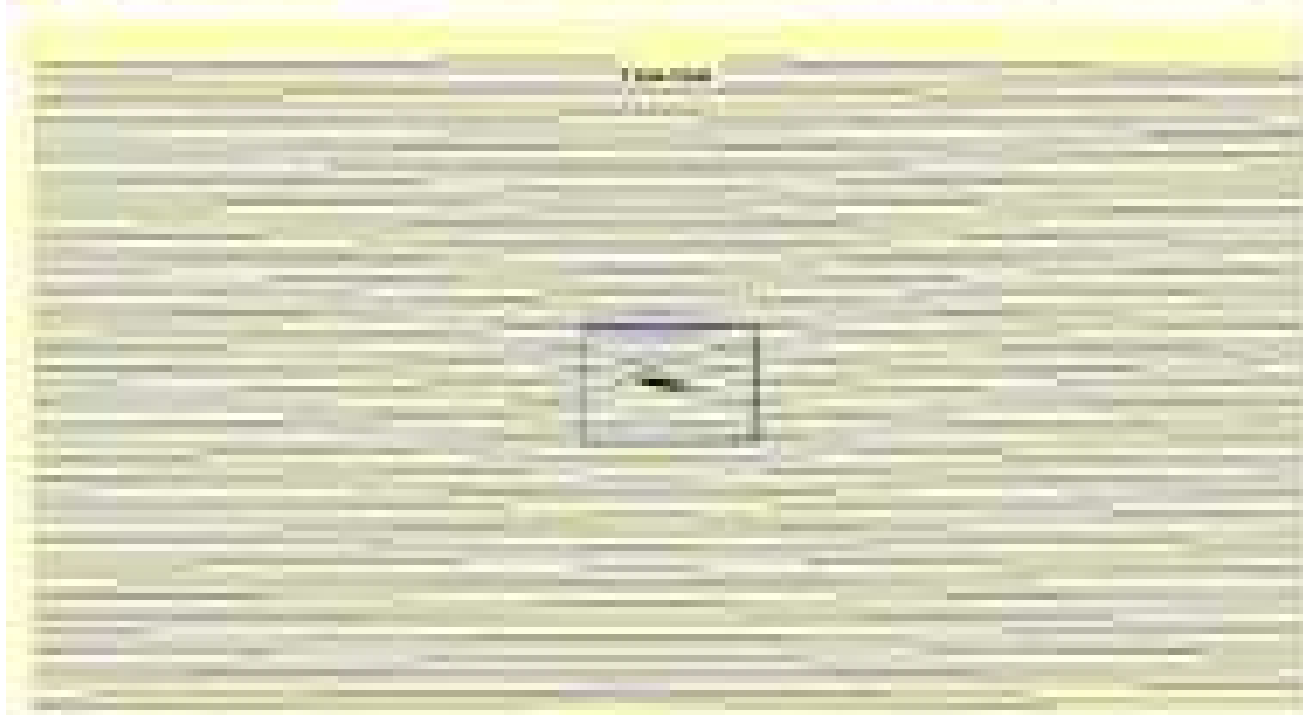
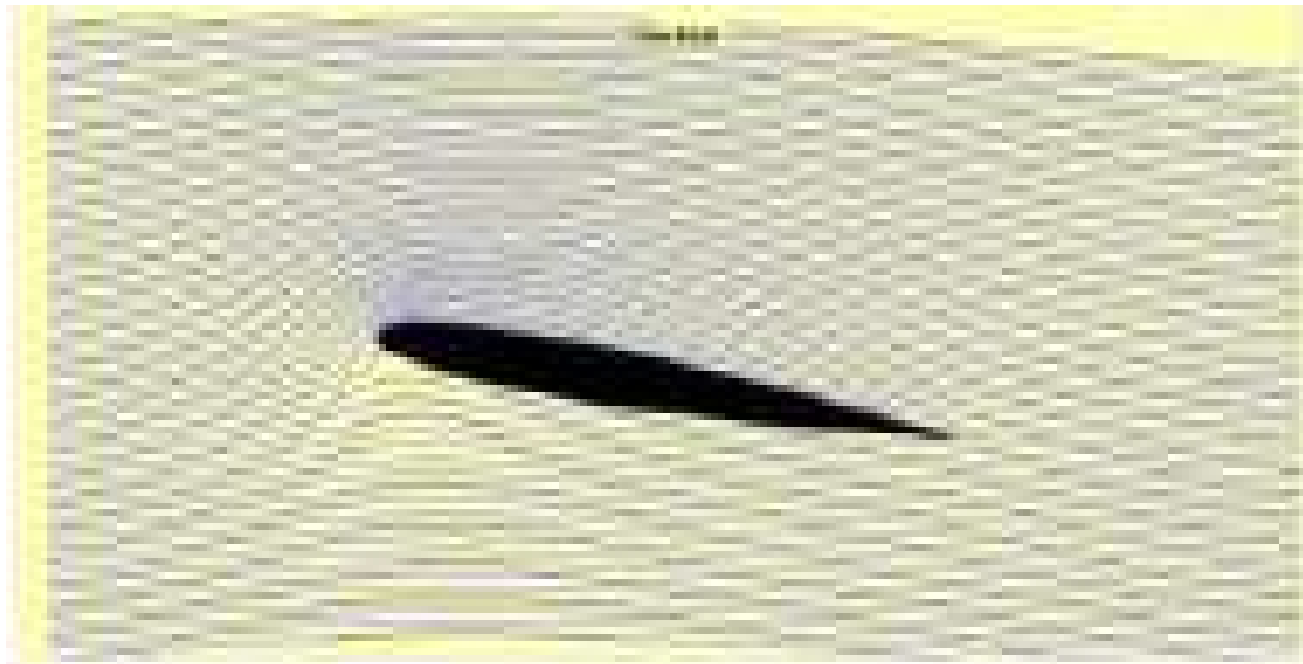
A-A Wing Section

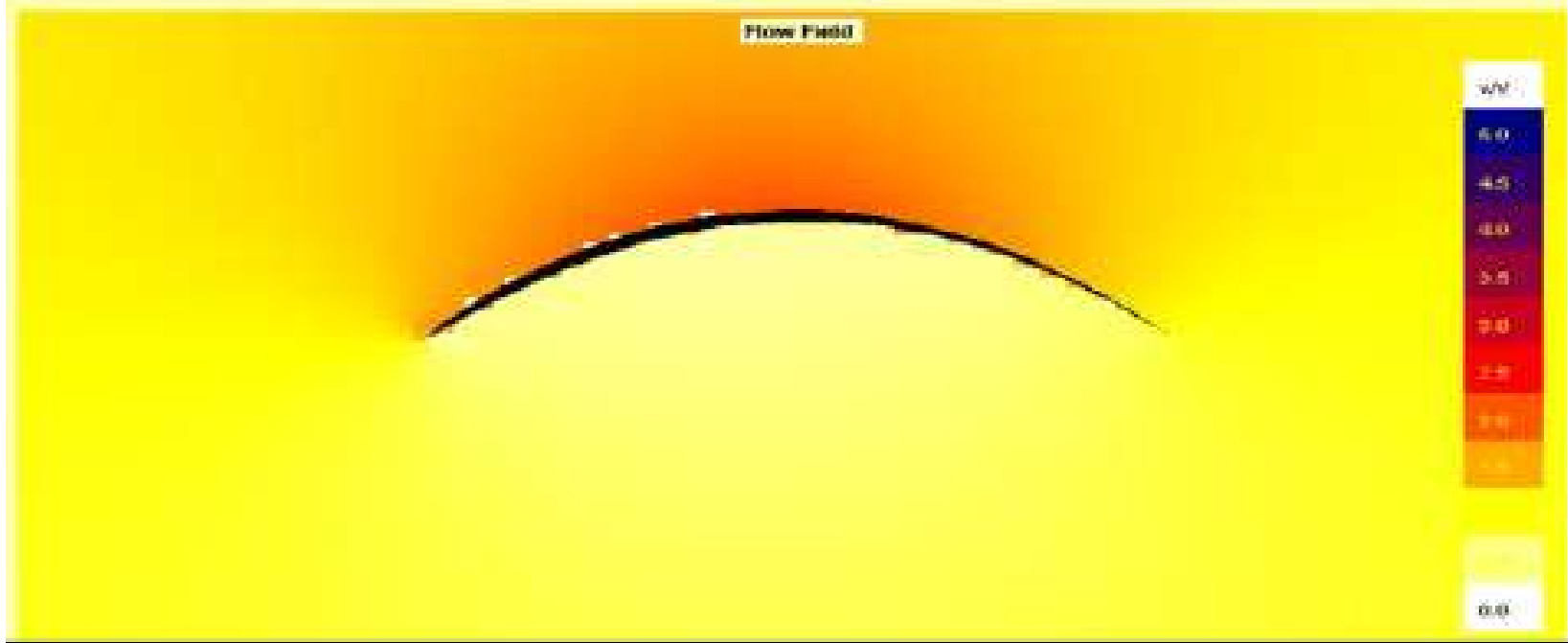
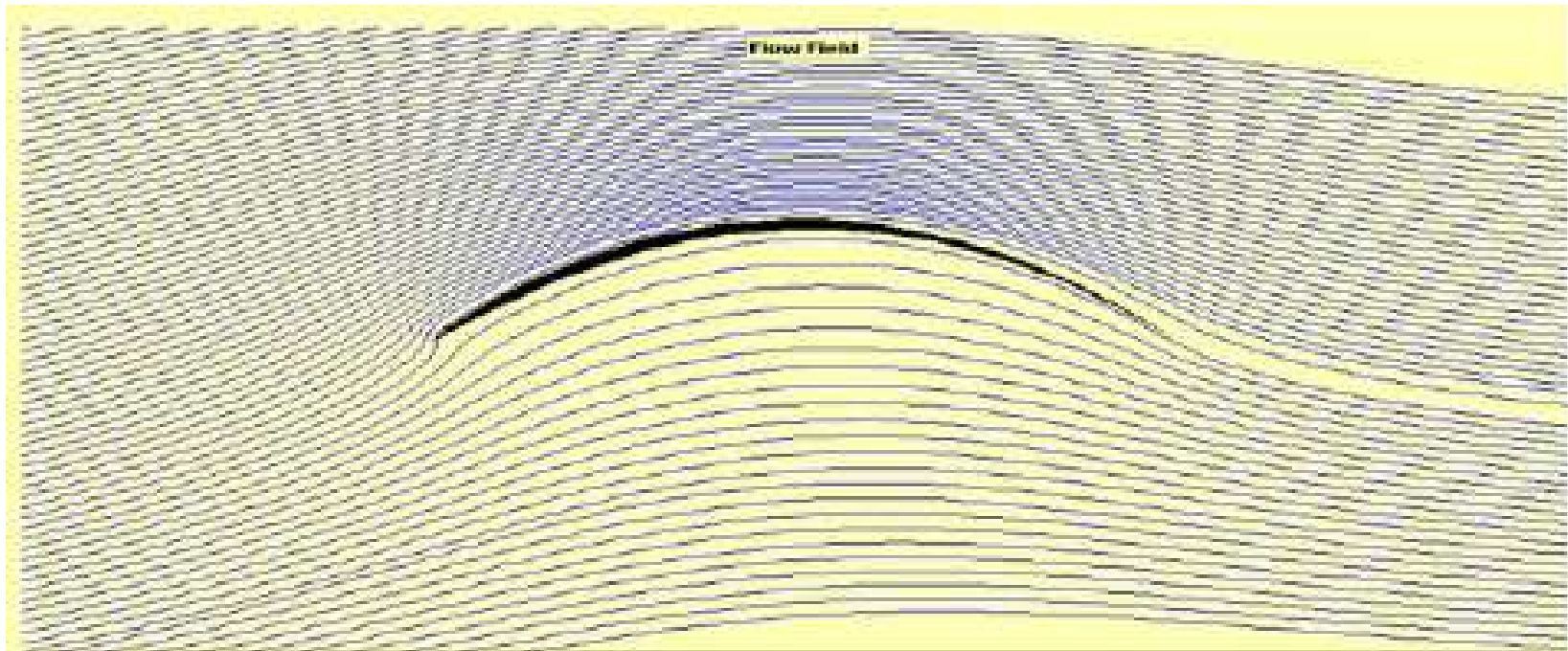
C-TECH

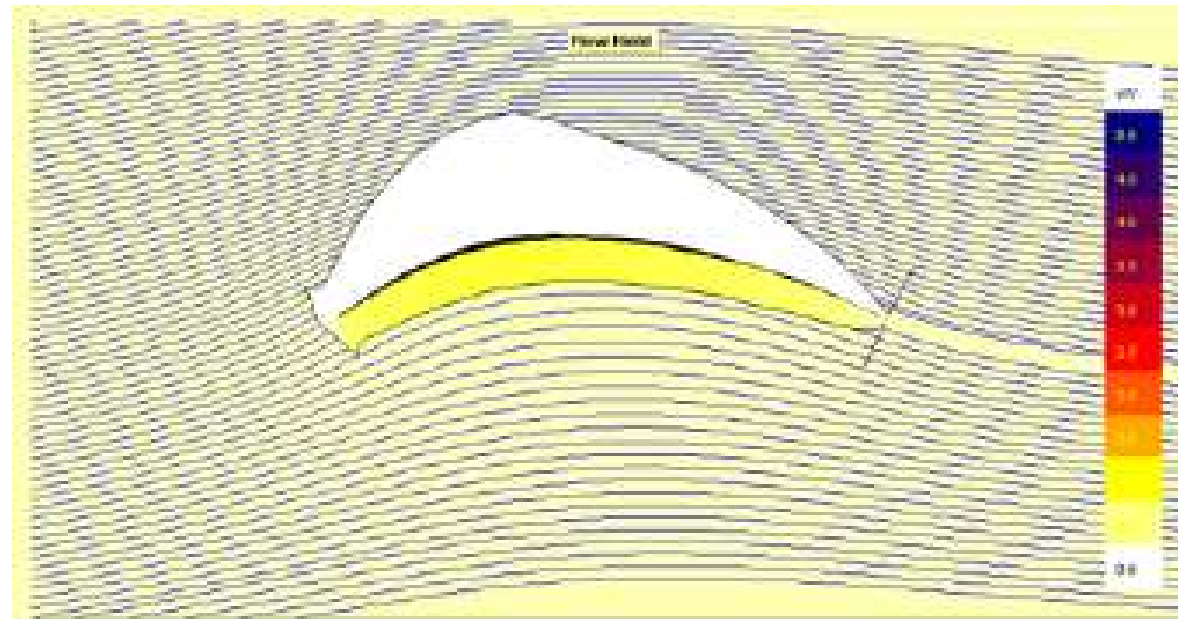
AC0-300 WING
 Rule details
 AC 300 Wing Profile details

DATE	APPROVED	DESIGN	SCALE	NO. OF SHEETS	TOTAL SHEETS
2023/01/01	CS	TM	1:1	23	23

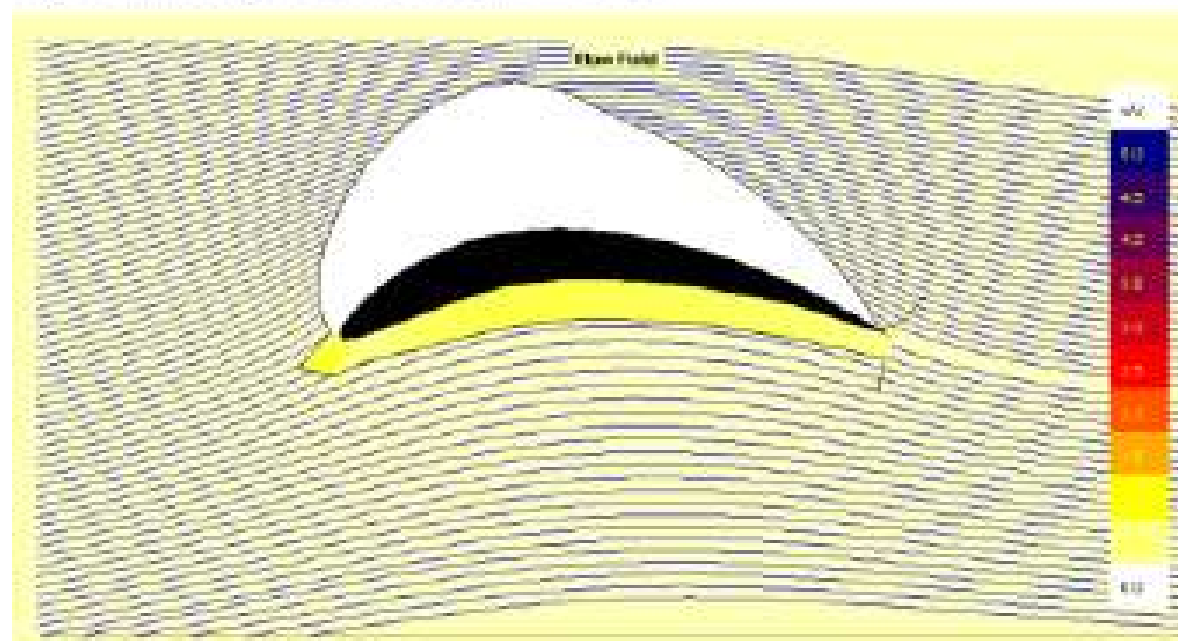
NO.	DESCRIPTION	DATE	APPROVED	DESIGN
1	Issue	2023/01/01	CS	TM



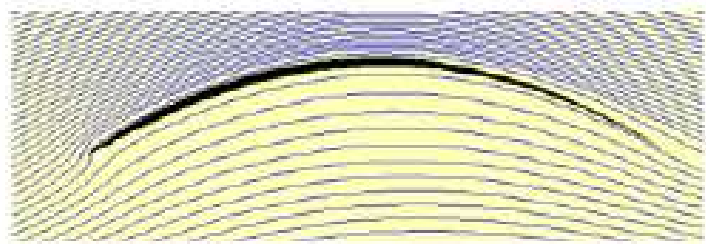
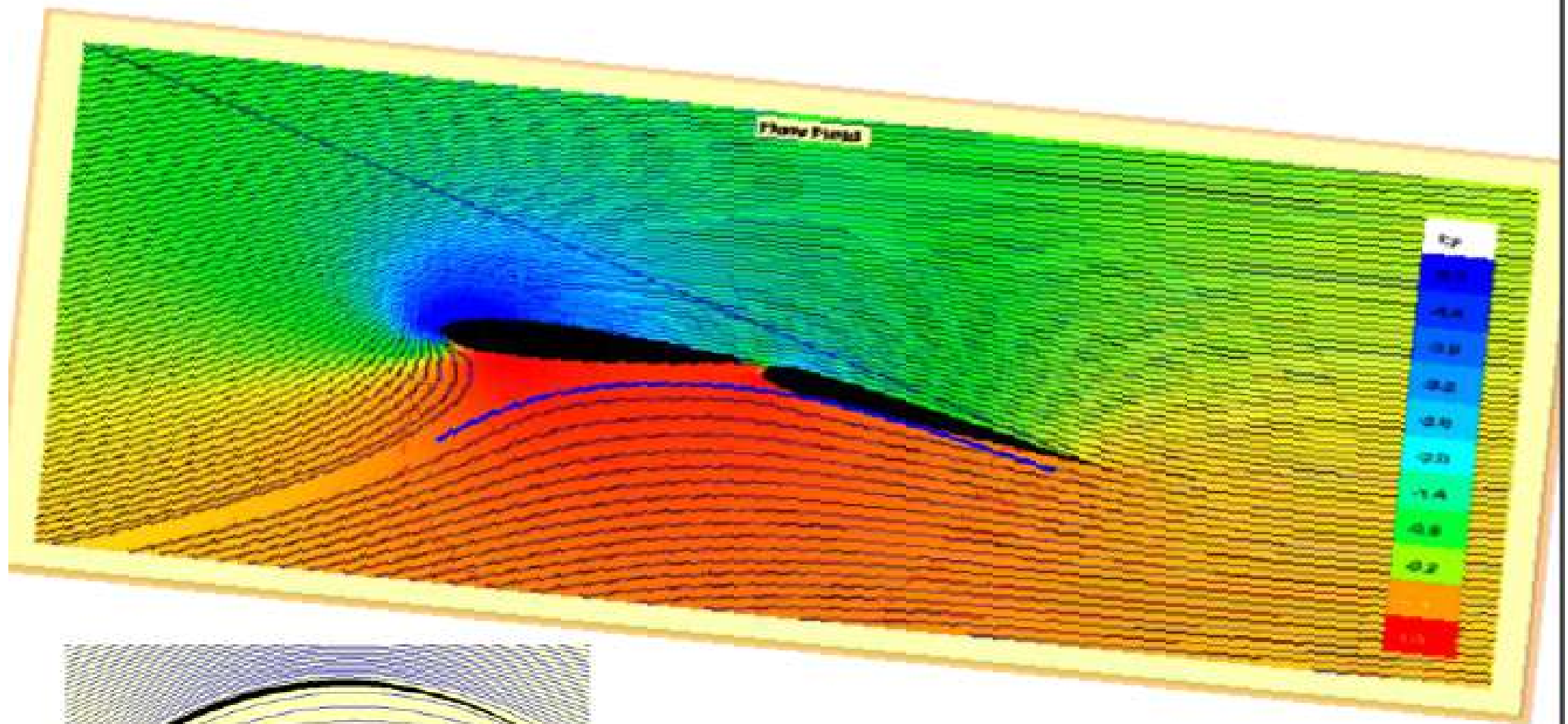




Angle of attack 3 degrees c_l 1.5 c_d .0318 maximum c_l 1.8



Angle of attack 3 degrees c_l 2.09 c_d .0310 maximum c_l ~2.6



In the mid 1800 competitive sailing and the odd assortment of boat were categorized according to their length. 6 footer, yes 6 feet, 8 footers, 10 footers, 12 footers, 14 footers, 16 footers, 18 footers, 21's and I believe 23's.

12's, 14's, 16's, 18's are all strong competitive classes today and there is a revival of a few 6's, 8's and 21's

Initially, crew numbers were typically length divided by 2, I can remember 14's with 5 crew members in the early 1950's. in 1951/2 I crewed on a 21 with a crew of 8. Somewhere in the 50's the restrictions reduced allowed sail areas

By 1960 crews were down to 3 and light weight chine hulls were replacing moulded ply carvel hulls. Working sails restricted to 200 sq ft and extras to 250 sq ft , minimum hull weight was 140 lbs. Trapeziuses had been introduced for use by the crew.

1966 to 2003 was an extended period of change. Crew down to two, both on wire, extras up to 300 sq ft, asymmetric spinnakers, bow mounted spinnaker poles and evolution of a significant upgrade of the International 14 rules